



GRAPHIC DESIGNER

WWW.LARSSHAW.COM

3620 COUNTRYWOOD COURT

SAN JOSE, CA 95130

LARS_SHAW@YAHOO.COM

PHONE: 408.515.5271

RESUME

SKILLS

Mac and PC computer literacy with expertise in Adobe Illustrator, Photoshop, In-Design, and experience in Lightroom, QuarkXPress, Keynote, PowerPoint and Microsoft Word

EXPERIENCE

Senior Designer | FineLine Graphics & Design | 2006-Present

Graphic design, art direction, digital retouching, and production graphics for Fortune 500 corporate companies including NetApp, Cisco Systems, Plantronics, Hitachi, and Genentech. Design for print collateral and multimedia projects. Produced and maintained consistent typographic standards for clients.

Freelance Designer | Green Bits | 2014-2015

Concepted and designed corporate company logo. Created and produced the Green Bits brand identity guidelines along with business cards, mail campaign flyer, table drape and event signage.

Freelance Designer/Production Artist | Exponent Partners | 2013, 2015

Updated the company brochure with new graphics and relative content. Concepted and designed an 8 page white paper, a client success story, and created a working success story template.

Contract Production Artist | VMware | 2011-2013

HTML production, OFT and text creation, while maintaining graphic and HTML standards.

Freelance Designer | Outright.com | 2009-2012

Graphic design, art direction, and production graphics for print collateral projects. Produced and maintained consistent graphic and typographic standards for banners, large signage, handouts, and business cards.

Teacher | The Harker School | 2005-2006

I taught digital photography and graphic design as part of their summer school program. During the regular school year I continued these classes in their after school program.

Freelance Designer | Esomnie | 2004-2005

Art directed and designed graphic content for corporate logo and business card. I also concepted and designed multiple client web sites.

EDUCATION

BFA in Visual Communications, University of Arizona | 1999-2004

URBAN SLEEP STORE



urban

A B C D E F G H I J K L M N

O P Q R S T U V W X Y Z

a b c d e f g h i j k l m n

o p q r s t u v w x y z

CINEMATIC REFLECTIONS



CINEMATIC
REFLECTIONS



CINEMATIC
REFLECTIONS

James Baldanzi
Managing Marketer

408 875-7483
james@cinimatic.com

www.cinimaticreflections.net

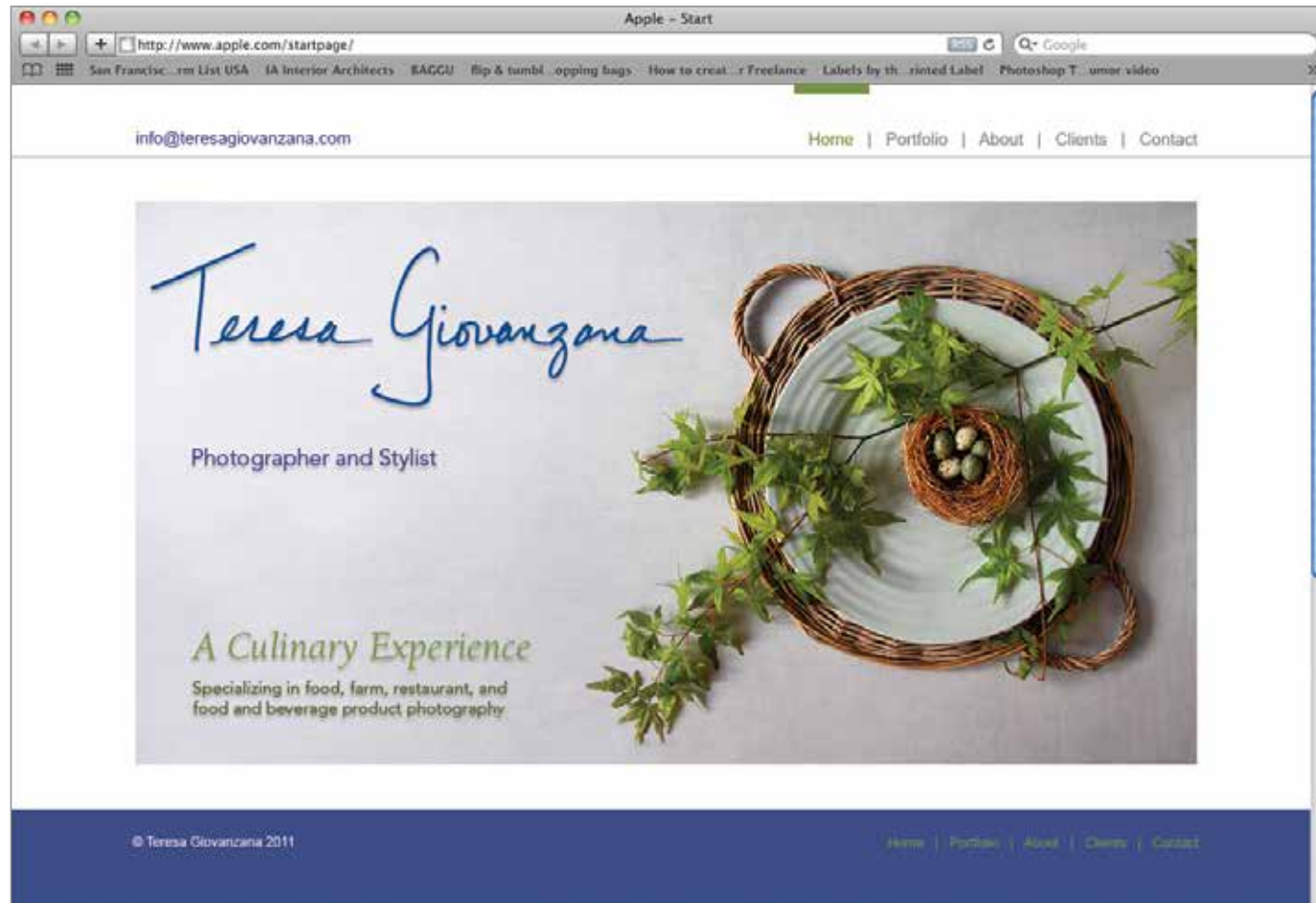


CINEMATIC
REFLECTIONS

James Baldanzi
Managing Partner

408 875-7483
james@cinimatic.com







30 Day FREE Trial
Only \$6.95/month!

Q Why is “Outright” listed **FIRST** under eBay’s Most Popular App’s?

A Over 20,000 eBay sellers rely on Outright to organize their finances and keep them prepared for taxes.

Without the complexity of a full blown accounting system, Outright:

- Organizes your eBay, PayPal, e-commerce, bank & credit card accounts into one place
- Shows you exactly what’s going on in your business and prepares you for tax time
- All with **NO** set up or learning

Outright imports and organizes all your financial transactions into one secure, easy-to-understand place, *while you sleep* — saving you hours of busywork.

- Nightly updates from your financial accounts
- Automatically categorized transactions
- You can add or edit transactions anytime

Your Accounting Tasks On Auto-pilot

Profit Over Last 3 Months

Income: \$40,753.86 Expense: \$31,521.21

Know How You’re Doing The Easy Way

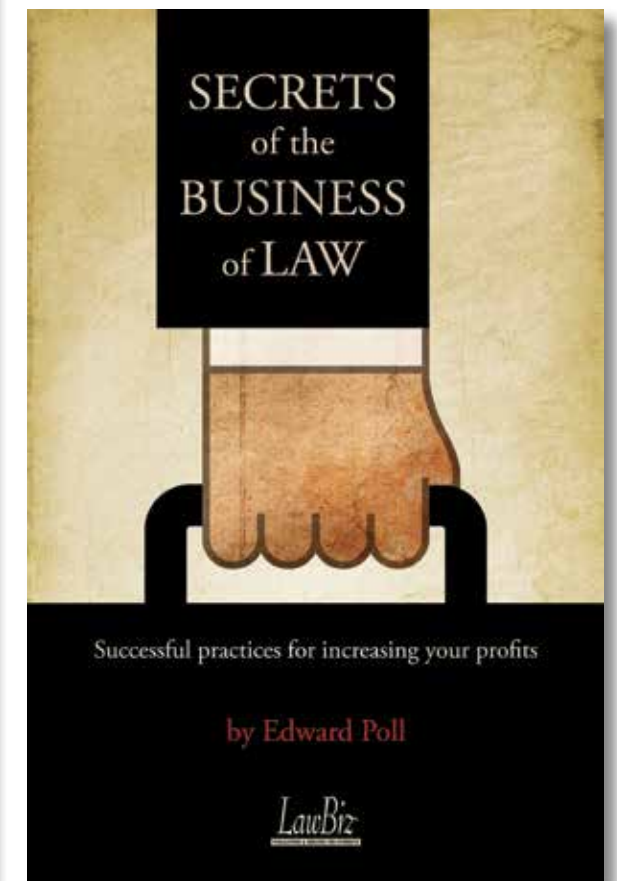
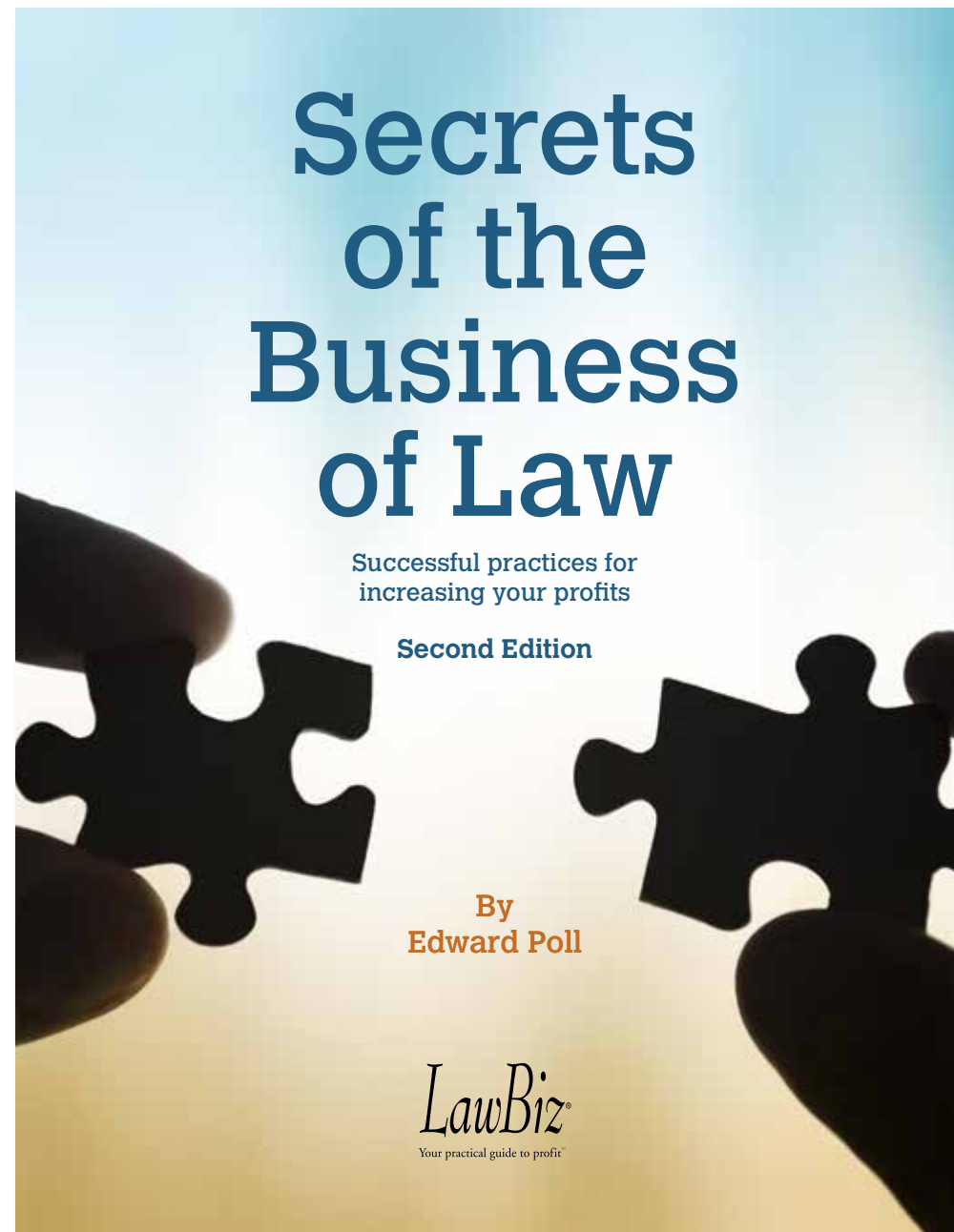
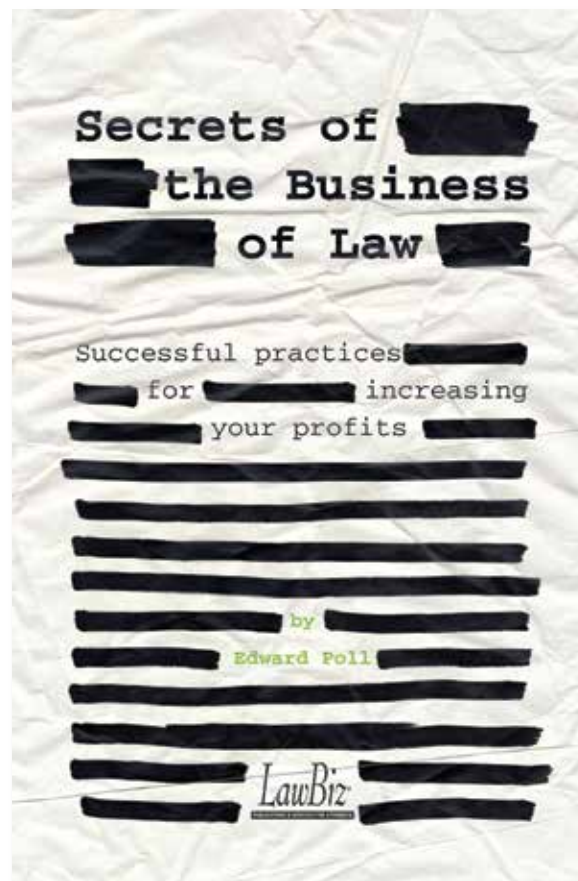
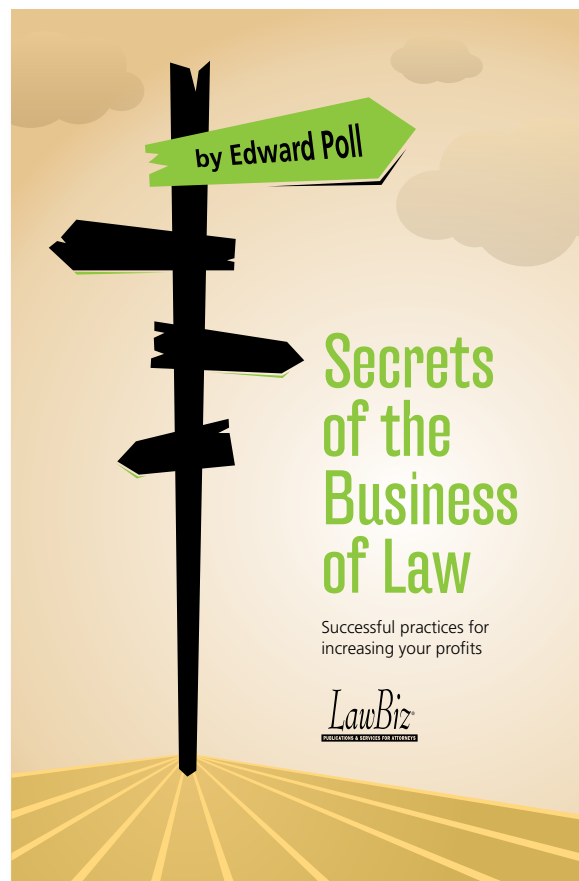
Check out Outright

Look for the ‘Most Popular eBay Apps’ on applications.ebay.com

2009 Self Employment Tax Calendar	
Feb 2	1099MISC for Contractor: Due to independent contractors paid more than \$600 in 2008
Mar 2	1099MISC for IRS (Mail): Due to IRS for independent contractors paid more than \$600 in 2008
Mar 31	1099MISC for IRS (Electronic): Due to IRS for independent contractors paid more than \$600 in 2008
April 15	Q1 Estimated Taxes: First installment for 2009 estimated taxes Yearly Tax Filing: 2008 calendar year tax return or Form 4868 for extension
Jun 15	Q2 Estimated Taxes: Second installment for 2009 estimated taxes
Sept 15	Q3 Estimated Taxes: Third installment for 2009 estimated taxes
Oct 15	Yearly Tax Filing (Extension): 2008 calendar year tax return for those who filed an extension
Jan 15	Q4 Estimated Taxes: Fourth installment for 2009 estimated taxes
Get started for free at http://signup.outright.com/mg	
Brought to you by Outright Free simple online bookkeeping software	



LAWBIZ BOOK COVER



PRESENCE TELECARE



Students in Burney, CA achieved their communication goals well ahead of schedule

Background

Fall River Joint Unified School District in Burney, CA was interested in SLP telepractice as a way to ensure guaranteed access to SLPs and accelerate their students' progress toward their IEP goals. During the 2009-10 academic year, the district used the Presence TeleCare service to provide services to students with communication disorders.

Student Needs

Fall River selected 42 students to receive services from Presence TeleCare.

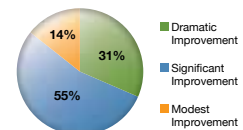
- 100% articulation disorders
- 100% language disorders
- 100% learning disabilities, were cognitively delayed, or suffered from ASD
- 67% in grades K-6; 33% were in grades 7-12

Service Provided

2 tele-SLPs in the Presence TeleCare network provided services to the Fall River students using the Presence TeleCare custom web platform. The SLPs worked remotely at locations 250-500 miles away from Burney. Service schedules followed students' IEPs, with sessions managed in a 1-on-1 or 1-on-2 format. For kindergarten and first grade students, a Fall River para-educator was present to supervise the sessions. SLPs also attended all IEP meetings virtually via the Presence TeleCare web platform.

Results

86% of students improved significantly or dramatically.
14% were dismissed early because they achieved their communication goals.



exciting. When you go for months not providing a service, it gets very stressful knowing you are not meeting the requirements you have agreed to on an IEP. With telepractice, I didn't have to worry about it. That definitely gave me peace of mind."

Implications

The results demonstrate that students can achieve or make substantial progress toward their communication goals with the help of Presence TeleCare's SLP telepractice service. Across a variety of communication needs and ages, students made significant progress. The 14% early dismissals suggest that telepractice is a means for reducing caseloads and costs for schools.

Contact us today: <http://PresenceTeleCare.com> or (415) 512-9000

PresenceTeleCare, LLC 480 2nd Street, Suite 303 San Francisco, CA 94107 Phone: (415) 512-9000 Fax: (415) 520-5444
Copyright © 2010

Educator's Brief – July 2010



Case Study Attributes

School Year

2009-10

Number of Students

42 students

Student Needs

Articulation, Language

Grade Level

K-12

Number of SLPs

2

School Profile

Rural



Telepractice Opportunities

Choose your own schedule with online speech therapy!

Presence TeleCare puts you on the cutting edge of technological advances in speech language pathology. We make it our first priority to support our SLPs, ensuring delivery of exceptional services to clients across the country.



Join the fastest growing telepractice company in the nation!

- Full and part time positions
- CF positions available
- Begin Fall 2011

Apply online TODAY:
www.PresenceTeleCare.com/Careers

(415) 512-9000 or careers@presencetelecare.com

Presence TeleCare 480 2nd St., Suite 200 San Francisco, CA 94107 415 (512) 9000



Making a Lasting Impression

"I am very impressed... I cannot imagine anything topping the quality of speech sessions that we are getting with Presence TeleCare right now."

– Mike C., parent



"Our SLP has thought of everything and my son actually looks forward to the sessions with her. My son loves the program interaction with her."

– Yael K., parent



"I'm impressed; I am very happy with the clarity of the webcam meetings and audio. You were way ahead of [our school] in being ready."

– Tonya L., parent



"I really like the option of participating in the session with my child. Previously, I was never allowed to join my daughter in the session. Great option."

– Barbara C., parent

"Being able to access speech therapy online is awesome, absolutely awesome."

– Consuelo M., parent

"[Our SLP] is wonderful; a great fit for my son."

– Tyrone B., parent

"Really, really good. The SLP is very sweet to my son. Awesome system."

– Dwane R., parent

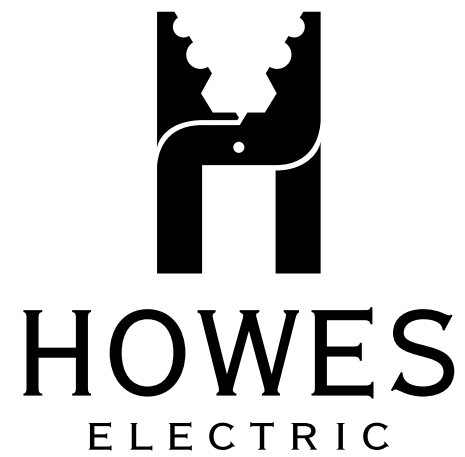
"My daughter loves your program."

– Anthony S., parent

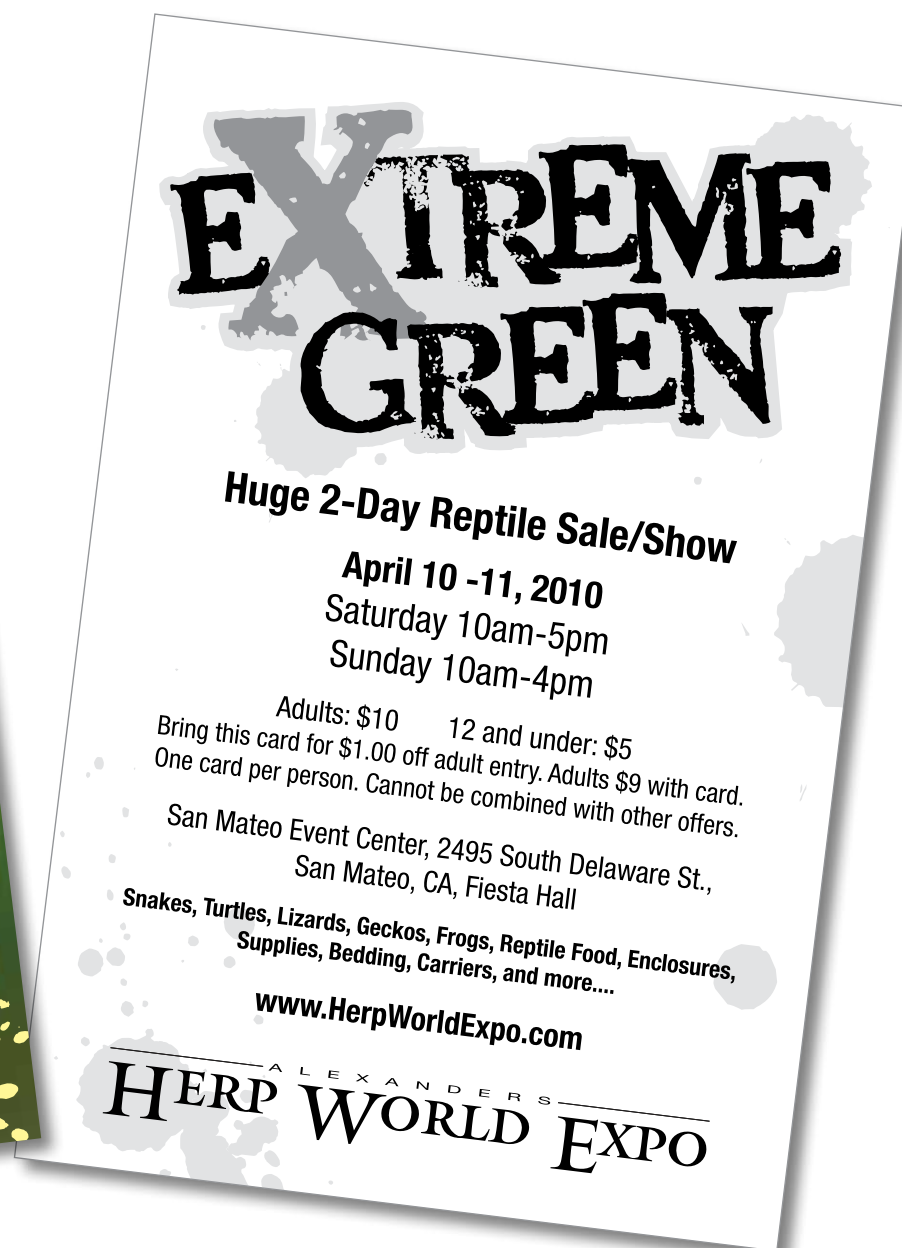
<http://PresenceTeleCare.com>

Contact Schools@PresenceTeleCare.com to learn more! Phone: (415) 512-9000 Fax: (415) 520-5444
Copyright © 2011

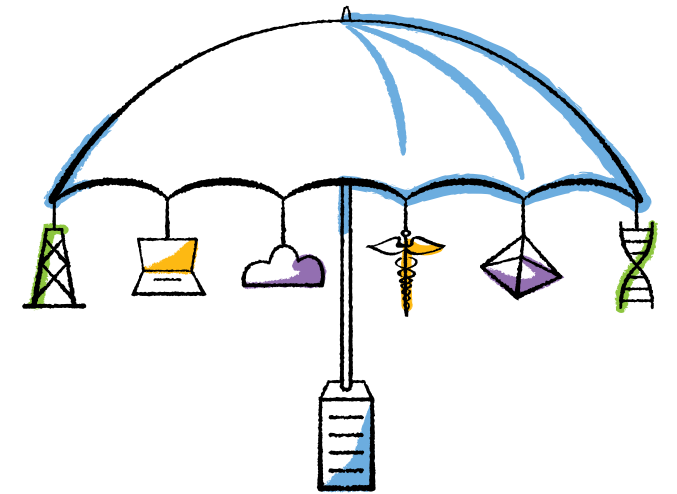
LOGOS



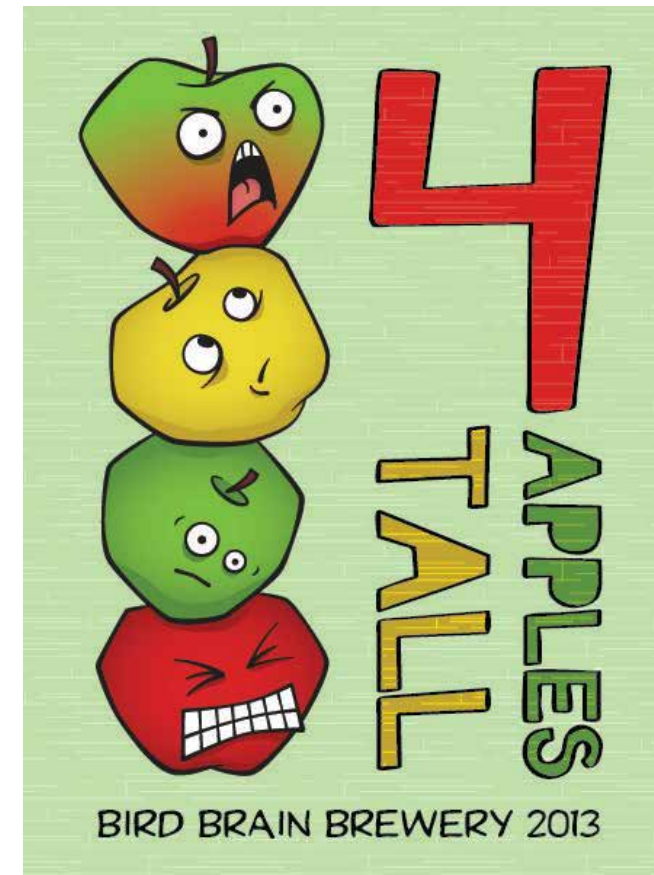
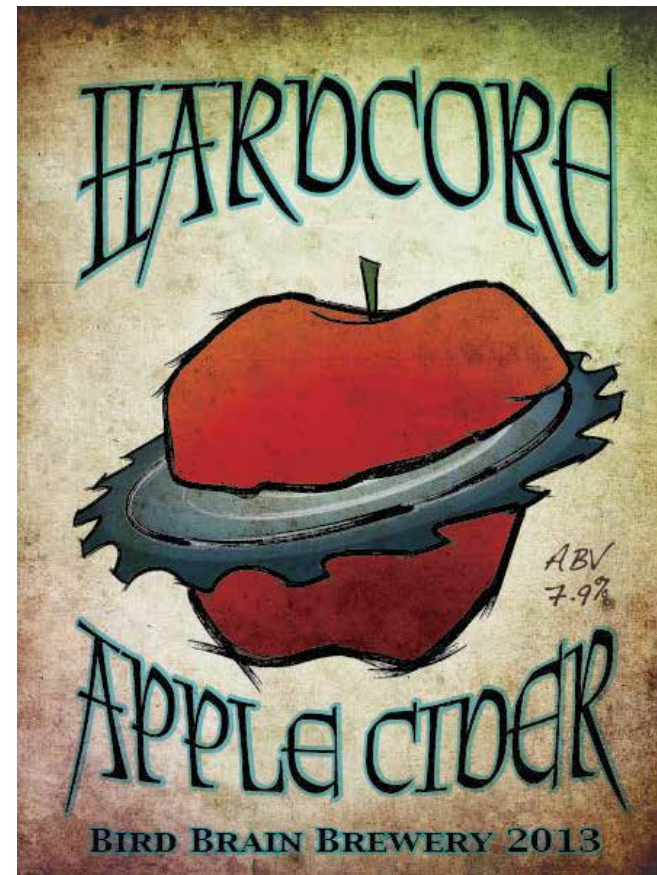
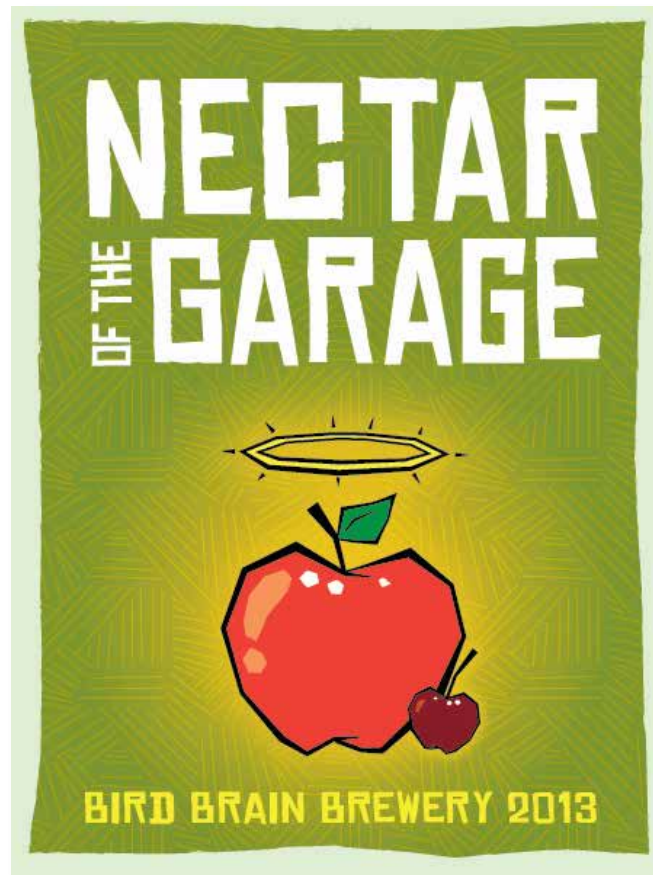
EXTREME GREEN



NETAPP ILLUSTRATIONS



BIRD BRAIN BREWERY LABELS



PAIR^aDICE CASINO PARTIES





Let's Get Your Party Rolling!

We bring casino action and excitement to your party or event. Let us guide you through a fantastic, fun-filled Las Vegas experience where you and your guests get a chance to play (and learn) casino games and not lose a penny!

Pair a Dice Casino Parties provides the ultimate in casino gaming equipment and dealers for events such as:

- Fund-raisers
- Theme Parties
- Banquets
- Weddings
- Holiday & New Years Parties
- Backyard Barbeques
- Charity Events
- Conventions
- Reunions
- Team Building Parties
- Yacht Parties
- Poker Nights, Tournaments

... and much more!





So...Let the Good Times Roll

Our Equipment and Tables

- Beautifully designed, custom crafted tables featuring solid wood construction, custom cushioned arm rests and top quality, stain resistant felts
- High-quality clay composite gaming chips
- 25" roulette wheels with quality roulette chips
- 8' poker tables with speed cloth and brass cup holders
- 10' and 12' custom built craps tables with drink rail, solid oak double chip rails and fully padded arm rests. (8' Table also available)

Our Dealers

We take pride in providing some of the most professional and knowledgeable dealers in the industry. Putting fun first, our friendly dealers and staff are eager to make sure your guests have a great time and are always happy to teach or assist in learning any of our games.

Delivery

We provide timely, and reliable delivery to your desired location. Our "all inclusive" fee provides for the set-up and teardown as well.

Our Staff

Family owned and operated by Vance and Diane Morales with over 10 years of experience. Our efficient and always helpful office staff are happy to answer any questions you may have and assist you from start to finish with your event.

We know you have other choices when it comes to Casino Party rental companies - but we believe we're the BEST choice. We're confident we can make believers out of YOU, too!

Give Pair a Dice Casino Parties a call when planning your next Event.

For more information and a free estimate, please contact us at:
 408-988-DICE or email pairadicecasino@comcast.net

www.Pairadicecasino.com



SACRED HEART COMMUNITY SERVICE



A Community United to Ensure
Every Child and Adult is Free
From Poverty

ENDING POVERTY
STARTS WITH
YOU



Dear Friends

Since 1964 Sacred Heart Community Service has provided critical support to working poor families in our community. Last year alone, SHCS served over 65,000 families. Nearly 1,000 people come to us each day for food, clothing, emergency assistance, education, and programs designed to break the cycle of poverty.

The suffering of our neighbors in poverty is a brokenness that affects the entire community. However, even a small number of committed individuals can help restore to wholeness the lives of those in need.

To change lives and impact poverty, join us as we feed the hungry, clothe the needy, welcome the stranger, and provide the tools for self-sufficiency through our education, housing, and employment assistance programs.

We hope this information will inspire you to join us and make a financial contribution, volunteer your time, donate critical items, or get others involved.

In service,

Poncho J. Guevara
Executive Director

Sacred Heart Services

- Food Pantry
- Clothes Closet
- Housing and Utility Assistance
- La Mesa Verde Urban Gardening
- Early Childhood Education
- Homework Club
- English as a Second Language
- Computer and Office Skills
- Family Support and Case Management
- Citizenship Classes
- Parenting Education
- JobLink
- Financial Education and Tax Preparation
- Policy, Advocacy and Organizing
- Weatherization and Energy Assistance

What We Need

Food: Infant formula, pop-top canned food (soup, tuna, chili, veggies, fruit), bottled water or juice

Supplies: Backpacks for homeless families and individuals, blankets, men's pants, new socks/underwear, toddler diapers sizes 4, 5 and 6

Give

Sacred Heart Community Service needs your help!

1. Cash Gift

Your tax-deductible gift helps us purchase needed items (for more information: 408.278.2170)

Your Gift Makes a Significant Impact

- \$20 will provide 75 diapers for newborns and infants
- \$50 will provide 10 families with a three-day supply of groceries
- \$250 will provide a family a home garden and fresh produce for a decade
- \$750 will sponsor one child for Academic Summer Day Camp
- \$1000 will provide emergency shelter assistance for 20 families

2. Drives

Organize a group to secure donations for our programs (for more information: 408.278.2170)

3. Volunteers

We rely on volunteers to support our programs. Both individuals and groups are welcome. Give your time and make a difference in many ways, including:

Food + Clothing

Distribute food and clothing
Mon-Thurs: 9am-6pm
Fri: 9am-4:30pm

Welcome Center

Greet and refer customers to our services and other community resources
Mon-Fri: 9am-4pm

Housing

Help prevent homelessness by providing rental and emergency assistance
Mon-Fri: 9am-4pm

Policy, Advocacy and Organizing

Engage SHCS constituents and neighbors in research and action to combat poverty

Homework Club

Provide after school tutoring and enrichment to students grades 1-8
Mon-Thurs: 3-5pm

JobLink

Teach resume-writing and interview skills
Mon-Wed: 9am-4pm
Thurs: 9am-2pm

Preschool

Support early childhood education program for our youngest learners
Mon-Thurs: 9-11am, 11:30am-1:30pm



DONATION STATION

The donation station is located at the rear of our facility and is open:

- Mon-Thurs: 8am-5pm
- Fri: 9am-4pm
- Sat: 9am-12pm

To maintain consistent, quality service to our customers we request all volunteers schedule their shifts in advance. Please contact our volunteer office at: volunteers@sacredheartcs.org or 408.278.2170.

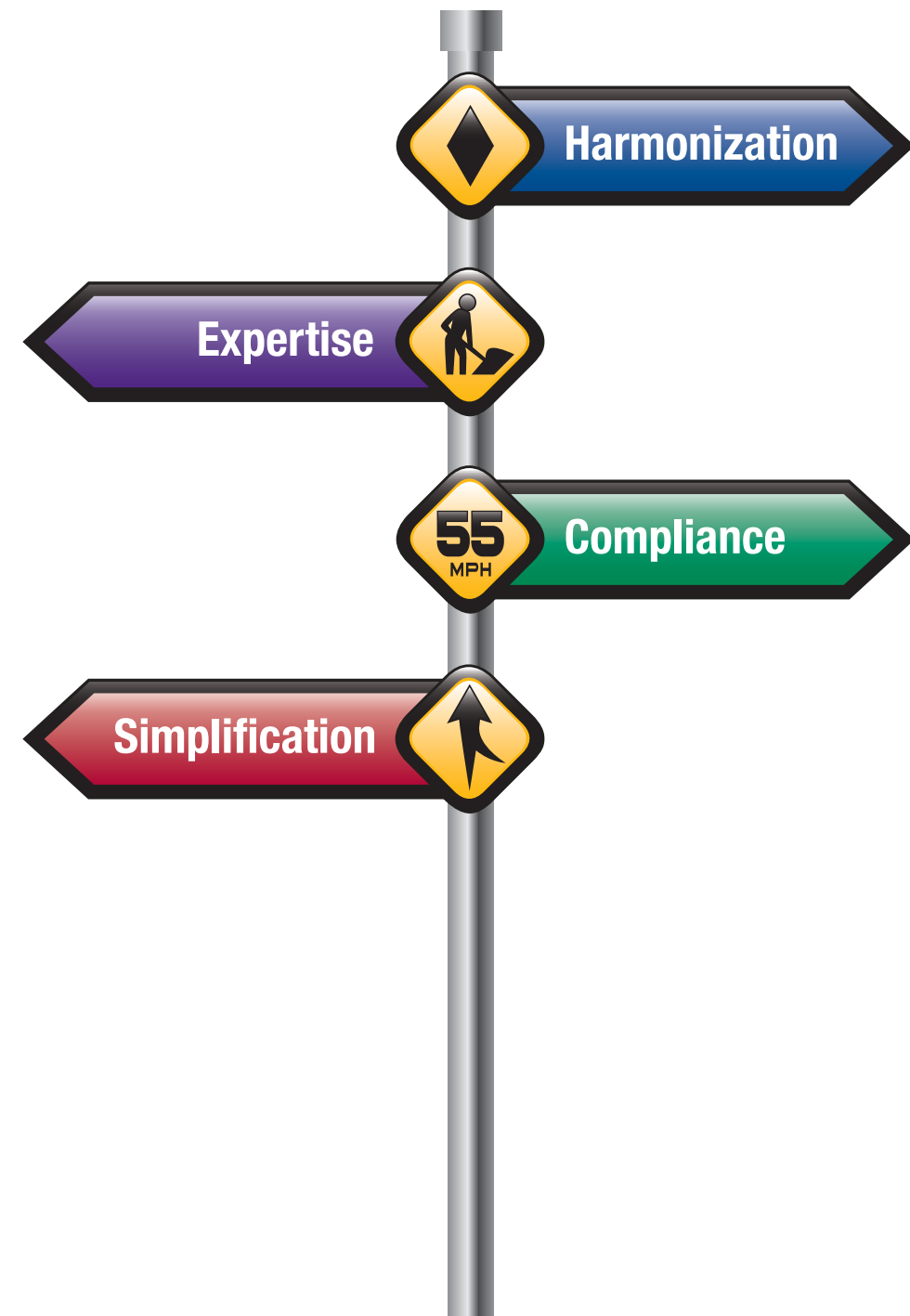
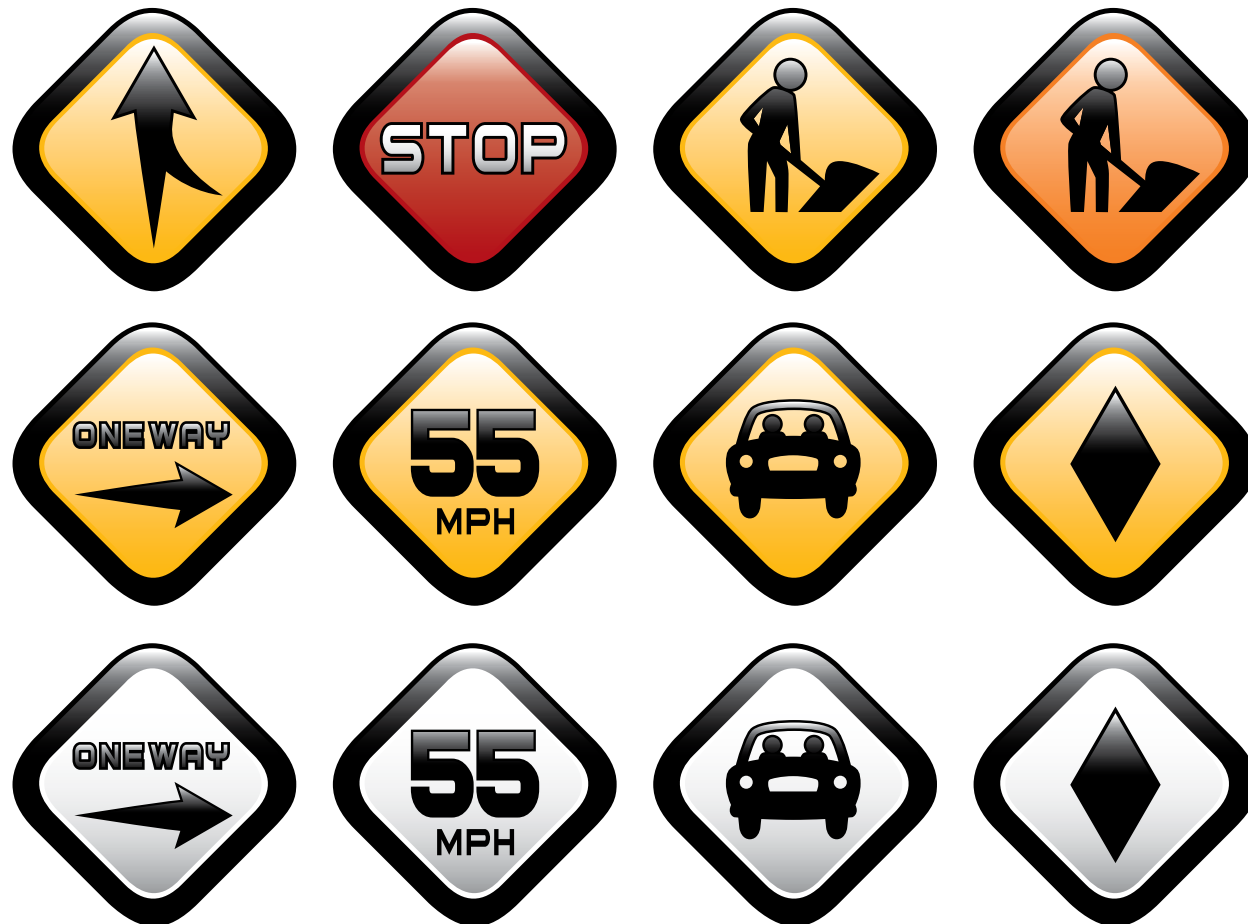


WWW.SACREDHEARTCS.ORG

Sacred Heart
COMMUNITY
SERVICE

1381 SOUTH FIRST STREET
SAN JOSE, CA 95110
408.278.2170

CORPORATE QUALITY SYSTEM & SUPPORT





SAY HELLO

TO SEE MORE OF MY WORK VISIT

www.larsshaw.com

EMAIL: lars_shaw@yahoo.com

PHONE: 408.515.5271

